



**Congratulations
on the recent
purchase of
your BOSS Player**

Please go through this simple manual for
initial setup instructions and visit the
website for more info.



support.allo.com



sales@allo.com



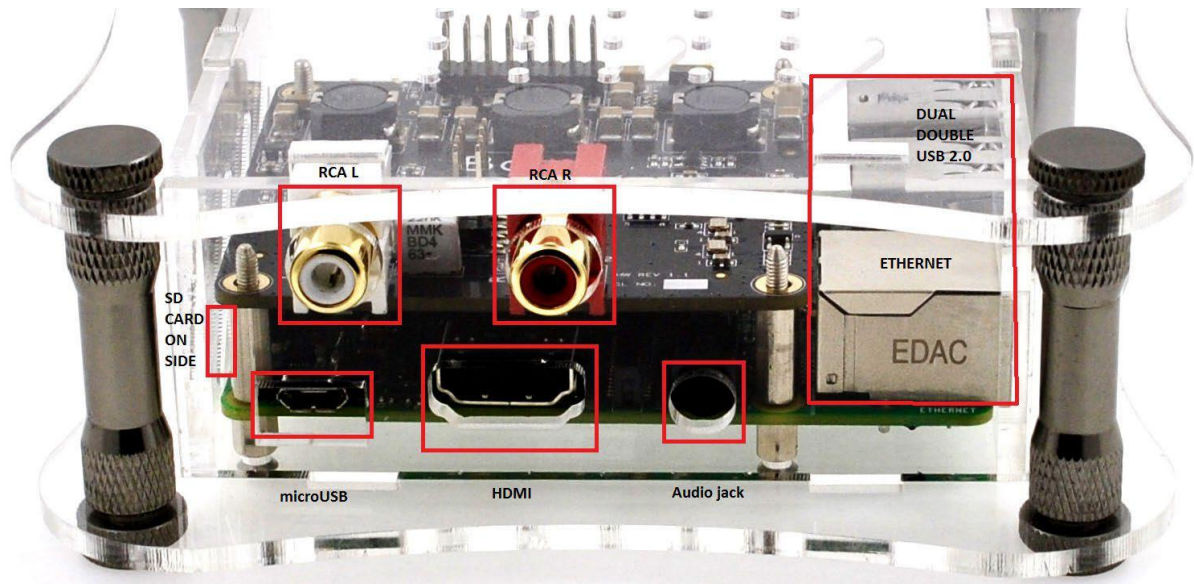
allo.com

Your Player Includes:

RPI3 + BOSS v1.2 Board + Acrylic Case + microSD Card with OS + 5V Power Supply

1. RPI3 SBC Board (bottom mother board)

- **Dual Double USB 2.0 Ports** >> Keyboard / Mouse / USB Storage / WIFI Dongle
- **microUSB** >> Power in 5V/1.8A
- **Ethernet Port** >> Connect to the network 10/100Mb
- **HDMI Port** >> Optional screen, to access the GUI
- **Audio Jack** >> Do not use
- **microSD Card** >> Flashed with your preferred OS



2. BOSS V1.2 Board (top HAT):

- **RCA L** >> Re-clocked analog output
 - **RCA R** >> Re-clocked analog output
- * TYPE C USB power connector (read instructions below)

Before powering on the unit please read the following

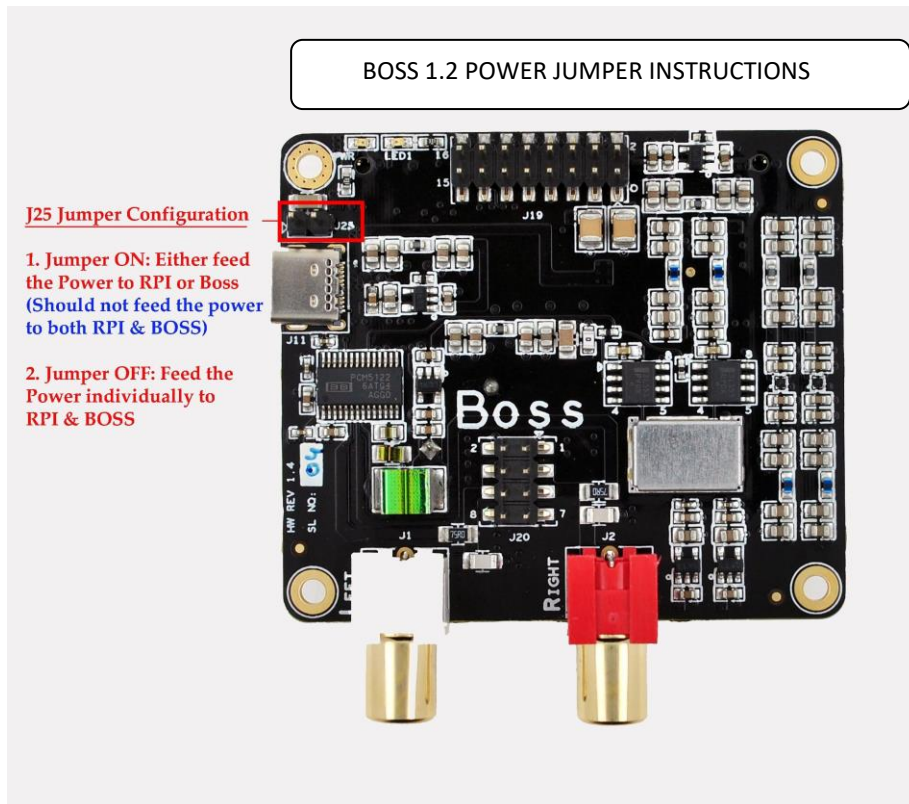
The BOSS v1.2 power jumper in your player is ON.

This means that you can feed power to:

- * the BOSS with the DC to typeC USB adapter cable provided
- * the RPI with the DC to microUSB adapter cable provided

DO NOT FEED POWER TO BOTH

If you want to feed power to both boards, please open your case and remove the jumper.



Boot-Up Checklist

1. LEDs are on, means power is fed to both boards. If not, check power source.
 2. RPI LED intermittent, mean OS booted properly. If static, try to power on again.
 3. Ethernet LED intermittent, means its connected to network. If not, try to re-boot.
- After 1-2 mins, the unit should be visible on your network.
 - You can access the user interface by accessing the IP or simply type: volumio.local or dietpi.local

For more information, please visit ALLO.com / **Plug & Play** / **BOSS Player Support & Downloads** at the bottom of the page